

# TeleScript PRO iNEWS Newsroom Operations Guide

Written by Chris Stringer  
Software Engineer  
Telescript, Inc.  
[cstringer@telescript.com](mailto:cstringer@telescript.com)

---

## Abstract

This document describes the TeleScript PRO teleprompting system's interoperation with the iNEWS Newsroom system, via Telescript's iNEWS Gateway. It covers the installation of the TeleScript software, configuration of necessary settings, and operational procedures for using the systems in conjunction with each other.

This document does not explain how to install and configure the iNEWS system; it assumes a working iNEWS environment. It also assumes the target TeleScript computer has been configured for TCP/IP networking, and can contact the iNEWS server via it. Please contact Telescript ([info@telescript.com](mailto:info@telescript.com)), iNEWS Support ([customerservice@avid.com](mailto:customerservice@avid.com)), or your system administrator for further assistance with these issues.

## Installation

### Requirements

For installation of the TeleScript PRO system, the following are required:

- **TeleScript PRO Software Installer**  
The latest version of the TeleScript PRO installer is available via the link below:  
<http://www.telescript.com/software/full/TeleScriptPro-WEB.exe>  
When prompted, choose the "Save to Disk" option, then select the Desktop as the Save To location (*the file may be moved or deleted after installation if need be.*)
- **TeleScript Security Key**  
A hardware security key is required for scrolling and network operations to function. Please contact Telescript ([info@telescript.com](mailto:info@telescript.com)) if you do not have a security key (either parallel port or USB) programmed for TeleScript PRO/NR.
- **DirectX 9.0c**  
It is strongly recommended that Microsoft DirectX 9.0c be installed on the system. It is available for download via the link below:  
<http://www.microsoft.com/windows/directx/default.aspx>
- **Windows Update Service**  
It is also recommended that the system be updated using Microsoft's Windows Update service. Follow the link below to begin the service:  
<http://www.windowsupdate.com>

---

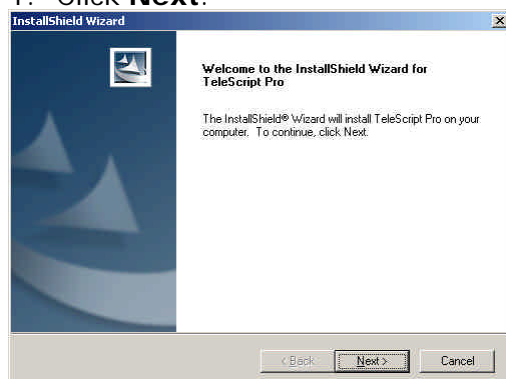
**Telescript, Inc.**

445 Livingston St., Norwood NJ 07648  
Tel: +1 201 767 6733 Web: [www.telescript.com](http://www.telescript.com)

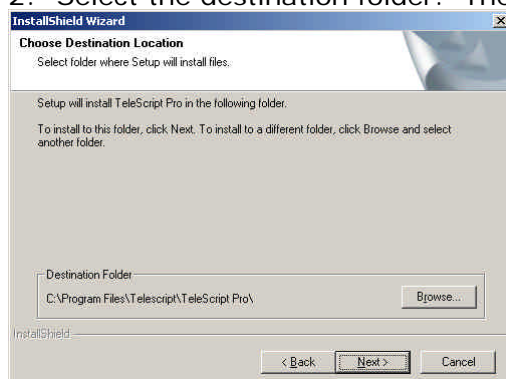
## Install TeleScript PRO software

Run the TeleScript PRO installer, and follow the install steps:

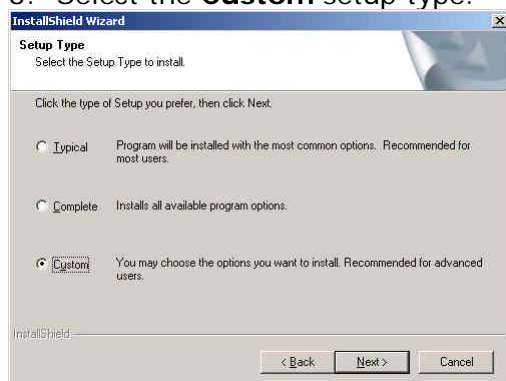
### 1. Click **Next**.



### 2. Select the destination folder. The default should work for most installations.



### 3. Select the **Custom** setup type.

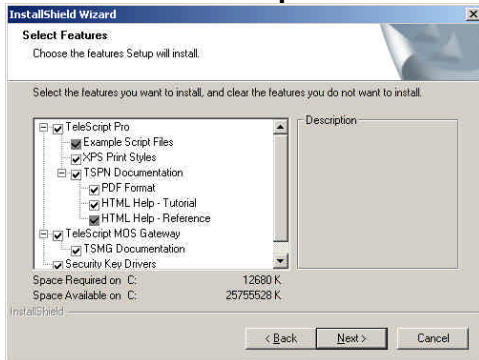


---

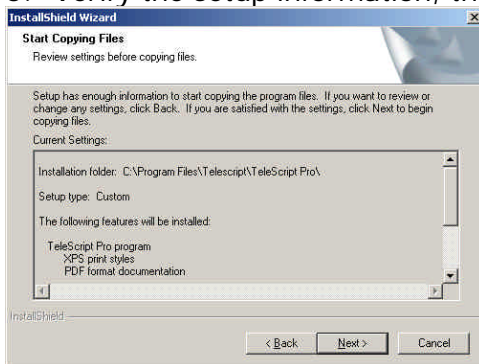
**Telescript, Inc.**

445 Livingston St., Norwood NJ 07648  
Tel: +1 201 767 6733 Web: [www.telescript.com](http://www.telescript.com)

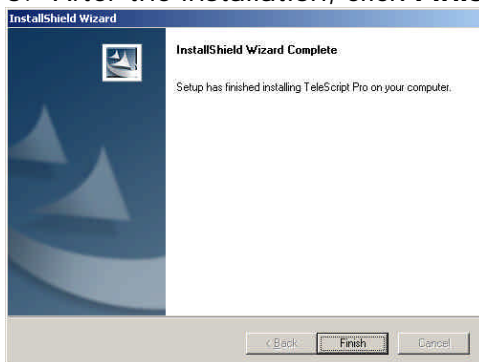
4. Check the boxes next to **TeleScript iNEWS Gateway**, and un-check the boxes next to **TeleScript MOS Gateway**, then click **Next**.



5. Verify the setup information, then click **Next** to begin the installation.



6. After the installation, click **Finish** to exit the installer.



## Connect the TeleScript Security Key

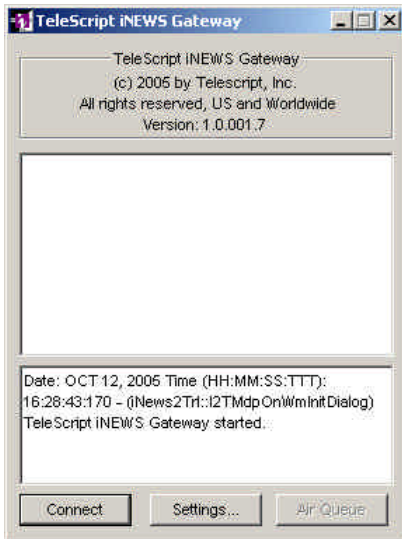
After the TeleScript PRO package has been installed, connect the security key to the computer.

**NOTE: DO NOT CONNECT A USB KEY TO THE COMPUTER BEFORE INSTALLING THE TELESCRIPT PRO SOFTWARE!** The correct drivers for the key are loaded when TeleScript PRO is installed. Connecting the key prior to install will result in a non-functional driver. Please contact TeleScript ([info@telescript.com](mailto:info@telescript.com)) for assistance.

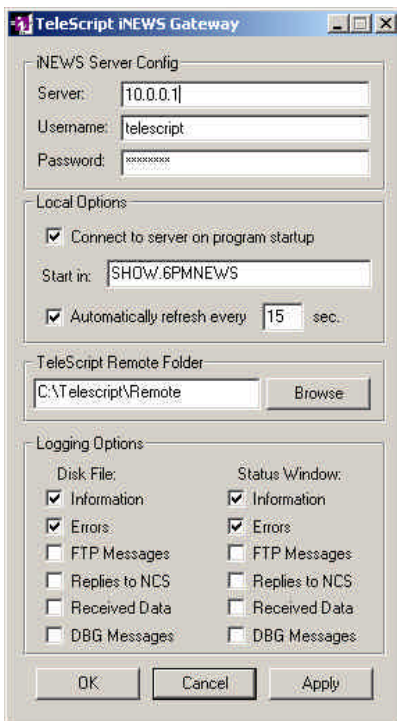
## Configuration

### TeleScript iNEWS Gateway

The TeleScript iNEWS Gateway program provides the communication between the iNEWS server and the TeleScript PRO prompting application. Start the program by clicking the *Start Menu > Programs > Telescript > TeleScript iNEWS Gateway* shortcut. The program window appears:



Click on the **Settings** button to open the settings panel:



Below is a description of the controls:

#### **iNEWS Server Config**

**Server:** Hostname or IP address of the iNEWS server

**Username:** iNEWS user name used for login

**Password:** password for iNEWS user login

#### **Local Options**

**Connect to server on startup:** Automatically sends the 'Connect' command when the program starts

**Start in:** The directory the program lists upon connecting.

**TeleScript PRO Remote Folder:** Folder where story files are saved, and the remote runlist file is stored. It may be a folder on the local computer, or a shared network folder.

**Logging Options:** Checking the boxes next to each information type will log that particular data to the selected log. For optimal performance, do not select any Disk File logging, and only select the Information and Error messages to be written to the Status Window log.

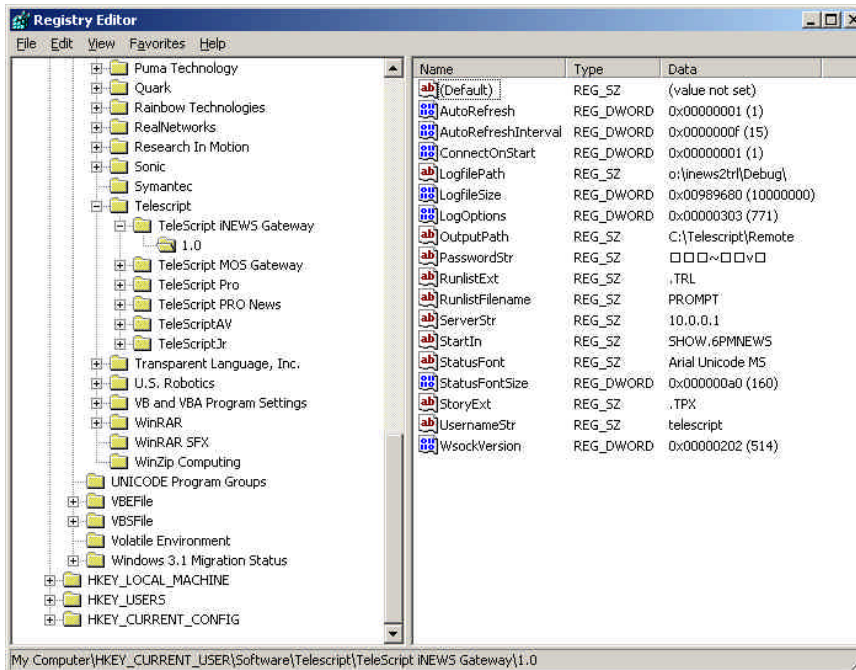
---

## Telescript, Inc.

445 Livingston St., Norwood NJ 07648  
Tel: +1 201 767 6733 Web: [www.telescript.com](http://www.telescript.com)

## Registry Settings

Several settings for the TeleScript iNEWS Gateway can only be changed using the Windows Registry Editor. Open the Registry Editor by clicking *Start Menu > Run*, then type in **regedit**, then click **OK**. The Registry Editor window should then appear:



Click the plus icon next to the following registry items: *HKEY\_CURRENT\_USER > Software > Telescript > TeleScript iNEWS Gateway > 1.0*. The window should look something like the above screenshot.

Below is a description of the settings that are not configurable through the settings panel:

**LogfilePath:** Folder where log files are stored. May be any valid Windows pathname.

**LogfileSize:** The maximum size of a single log file, in bytes.

**RunlistExt:** The filename extension used for runlist files. Must be **.TRL**.

**RunlistFilename:** The filename for the runlist. Default is **PROMPT**. Correlates to the Remote Runlist File setting in TeleScript PRO.

**StatusFont:** Font used to display status window text. Default is **Arial Unicode MS**.

**StatusFontSize:** Font size for status window text, in TWIPS (twentieths of a point, i.e. point size x 20). Default is set to **160** (hex **0xA0**), which equates to 8-point text.

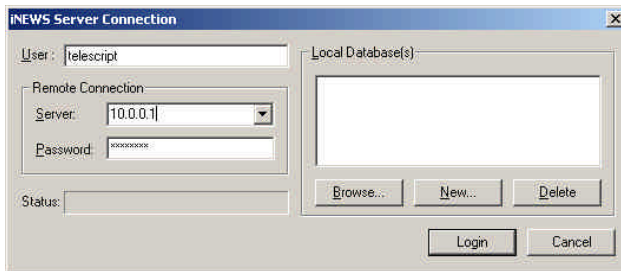
**StoryExt:** Filename extension used for script files. Must be **.TPX**.

**WsockVersion:** Version of Windows Sockets to use. Must be hex **0x0202 (514)**.

## Required Settings

The settings necessary to configure for your particular installation are **Server**, **Username**, **Password**, and the **TeleScript PRO Remote Folder**. *(The other settings may be altered after the system is functional.)*

The values to enter for **Server**, **Username**, and **Password** will be determined by your local iNEWS configuration. These will be the same as what is entered when starting the iNEWS Client software, as shown below:



For the examples in this document, the value entered for the **TeleScript PRO Remote Folder** should be *C:\Program Files\TeleScript\TeleScript Pro\Remote*.

## Connect and Minimize

After the settings have been entered, click **OK**. Then click the **Connect** button to connect the iNEWS Gateway to the server. Leave the program running “in the background” by pressing the Minimize button in the program’s title bar.

**NOTE: The TeleScript iNEWS Gateway must be running for TeleScript PRO to receive script and runlist updates!**

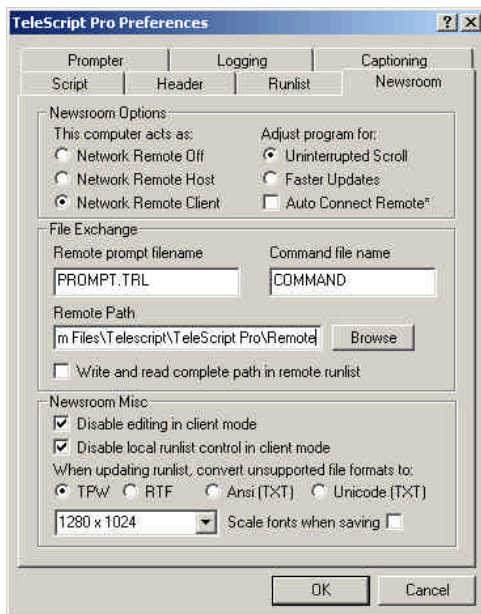
## TeleScript PRO

TeleScript PRO is the software application used for prompting. In conjunction with the iNEWS newsroom system and TeleScript iNEWS Gateway, TeleScript PRO receives runlist and script data, and updates may happen in “real time”. Before this functionality may be used, however, several settings must be changed in TeleScript PRO.

First, ensure that a Telescript Security Key is attached to the system (*see above*.)

Next, start the program by clicking *Start Menu > Programs > Telescript > TeleScript PRO*, or double-clicking the *TeleScript PRO* icon on the Desktop.

After the main program window appears, select *Tools > Options* from the main menu. In the Options dialog box, click on the Newsroom tab. The window should look like the following:



Check the radio button next to **Network Remote Client** and **Uninterrupted Scroll**.

The **Faster Updates** and **Auto Connect Remote** settings may be used after the system has been configured, but for now should be set to the defaults (*unchecked*.)

Under File Exchange, the **Remote prompt filename** should be set to **PROMPT.TRL**, the **Command file** should be **COMMAND**, the **Remote Path** should be *C:\Program Files\Telescript\TeleScript Pro\Remote*, and the checkbox should be clear next to **Write and read complete path in remote runlist**.

The boxes for **Disable editing in client mode** and **Disable local runlist control** should be checked, and **TPW** should be selected under **Convert unsupported file formats to**.

After the correct settings have been entered, re-start TeleScript PRO.

## Procedure

### Start/Connect the TeleScript iNEWS Gateway

Unless it's already running, start the TeleScript iNEWS Gateway by clicking *Start Menu > Programs > Telescript > TeleScript iNEWS Gateway*. After the program has opened, click its **Connect** button, and then minimize the program by clicking the Minimize button on the Title bar (*the "\_" button*.)

**NOTE: The iNEWS Gateway program must be running for runlist and script data to be received!**

### Start/Connect TeleScript PRO

Unless it's already running, start TeleScript PRO by clicking *Start Menu > Programs > Telescript > TeleScript PRO*. On the program menu, click *Tools > Connect*.

### Download and air queue with iNEWS Gateway

This section will assume that you have access to all of the necessary elements to create an iNEWS Rundown: users, scripts, etc. For assistance with these, please consult the iNEWS User's Manual, or [customerservice@avid.com](mailto:customerservice@avid.com).

For our example, first create a rundown with several scripts all containing text to be read on the prompter -- or for all intents and purposes use an actual rundown that will be used in production (*make a copy or backup, of course!*)

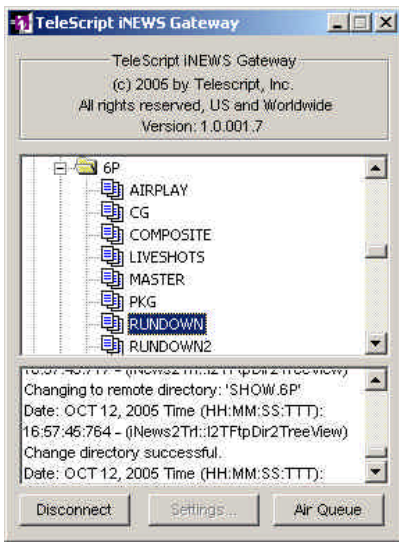
Here is an example of an iNEWS rundown:

Page	Slug	Anc	Wtr	OK	P	Camera	Format	Tape	Audio	Video	Total	
	=====NEWS OPEN=====								0:00	0:12	0:12	R
02	HEADLINE 2	kb		dsc					0:30	0:30	0:30	R
A01	ISRAEL ATTACK	DT	DT	cha			VTRVO		0:24	0:30	0:54	R
A02	GAS LEAK	BL	BL	jake			SOT		0:45	0:45	1:30	R
A03	CLINTON/KOREA	DT	DT	ebat			READER		0:38	0:00	0:38	R
A05	OPRAH BEEF			jake			VTRVO		0:20	0:55	1:15	R
A04	OKINAWA LAND	CW	DT	jake			VO		0:36	0:00	0:36	R
A06	SOUTH AFRICA UNREST	ML	ML	jake			RDR		0:45	0:00	0:45	R
									0:32	0:00	0:32	?
0073	AX-ABC: SOUTHEAST-UPDATE								5:01			W
A07	EXTORTION	BL	SJ	sco			RDR		0:30	0:00	0:30	H
A08	SENATE ETHICS	BL	DC	brog			VO		0:30	0:45	1:15	R
A09	NAB JOB FAIR	ML	DT	sco			VOSOT		0:44	0:00	0:44	R
A10	JOY TEST			sco					0:07	0:12	0:19	R
A11	TEASE	BL	BL	sco			VO RBOX		0:05	0:00	0:05	R
A99	TEASE: TAX POLL	DT	DT	sco					0:20	0:00	0:20	R
B	=====BREAK #1=====			dsc					0:00	2:00	2:00	H
B-01	DUBROFF/CALIFORNIA	DT	DT				VO		0:40	0:00	0:40	R
B01	INTERNET BOOZE	MWC		dsc x			VTRVO		0:25	1:00	1:25	R

**Telescript, Inc.**

445 Livingston St., Norwood NJ 07648  
Tel: +1 201 767 6733 Web: [www.telescript.com](http://www.telescript.com)

Next, bring up the iNEWS Gateway:



Click on the name of the queue to air, then click the **Air Queue** button. A flurry of activity then happens – each story file in the queue is downloaded and converted to TeleScript's TPX format, and the TeleScript PRO runlist file is written to disk.

Finally, bring up TeleScript PRO. If the program isn't connected, click *Tools > Connect*. The rundown will appear in the TeleScript PRO runlist window:

N	File	Slugline	Writer	Anchor	Read	Tape	Total	Show
1	1513609F.TPX	schwaid promotion	LK	News Anchor	00:00:27	00:00:00	00:00:27	00:00:27
2	13135ED2.TPX	another new story		News Anchor	00:00:14	00:00:00	00:00:14	00:00:41
3	1E135ECD.TPX	chris updates inews		News Anchor	00:00:07	00:00:00	00:00:07	00:00:48
4	16135BA1.TPX	mkd command		News Anchor	00:01:07	00:00:00	00:01:07	00:01:55
5	0C135BA1.TPX	testing updates		News Anchor	00:00:11	00:00:00	00:00:11	00:02:06
6	0B136095.TPX	testing updates		News Anchor	00:00:11	00:00:00	00:00:11	00:02:17
7	11135BA1.TPX	user account listing		News Anchor	00:00:49	00:00:00	00:00:49	00:03:06

All prompting operations can occur and the program may function normally, although performance will depend on the system's hardware and general configuration.

To stop receiving updates (manual control), click *Tools > Newsroom > Disconnect*.

## Telescript, Inc.

445 Livingston St., Norwood NJ 07648  
Tel: +1 201 767 6733 Web: [www.telescript.com](http://www.telescript.com)

## Support

Please use the following contact information with assistance with the above information:

**TeleScript PRO**  
**TeleScript iNEWS Gateway**

**Telescript, Inc.**  
445 Livingston St.  
Norwood, NJ 07648  
Tel: +1 512 203 7123  
[www.telescript.com](http://www.telescript.com)  
Contact: Chris Stringer, Software Engineer  
[cstringer@telescript.com](mailto:cstringer@telescript.com)

**iNEWS NewsRoom Computer System**

**Avid Technology, Inc.**  
Madison, Wisconsin 53719  
United States of America  
Tel (US Only): 1-800-800-2843  
[www.avid.com](http://www.avid.com)  
Contact: [customerservice@avid.com](mailto:customerservice@avid.com)