

TeleScript ProNEWS 6.2.1.092 ENPS 8.0, MOS-Gateway 8.1.0.005 Newsroom Operations Guide

Rev. December 28, 2017

TSWTX Multimedia Development Austin, TX

Abstract

This document describes TeleScript ProNEWS teleprompting system's interoperation with ENPS 8.0 Newsroom system, via MOS 2.8.4 protocol. It covers the installation of TeleScript Software, configuration of settings in both systems, and the operational procedures for using the systems in conjunction with each other.

This document does not explain how to install and configure ENPS; it assumes a working ENPS environment. It also assumes the target TeleScript computer has been configured for TCP/IP networking, and can "ping" the ENPS computer. Please contact Telescript West (info@telescriptwest.com), ENPS (support@enps.com), or your system administrator for further assistance with these issues.

Installation

Requirements

For installation of TeleScript ProNEWS, the following are required:

- **TeleScript ProNEWS Software Installer Ver 6.2.1.092 or higher**
- The latest version of the TeleScript ProNEWS installer is available at: <http://www.telescriptservice.com>
Click the link, "TeleScript Pro/ProNEWS Installer" and fill out the customer information form. When you are redirected to the "Download" page, select the .EXE or .ZIP installer link and, when prompted, select "Save". The file will be saved in your "Download" folder. MOS-Gateway 1.1.0.005 is included in the installer.
- **TeleScript Security Key**
A hardware security key is required for scrolling and network operations to function. Please contact Telescript West (info@telescriptwest.com) if you do not have a security key programmed for TeleScript ProNEWS.
- **DirectX (Minimum Version 9.0c)**
Microsoft Direct3D must be installed on the system. The required version is available for download via the link below:
http://telescriptwest.com/tswservice/download/directx_Jun2010_redist.exe
- **Windows Update Service**
It is also recommended that the system be updated using Microsoft's Windows Update service. Follow the link below to begin the service:
<http://www.windowsupdate.com>

TSWTX Multimedia Development

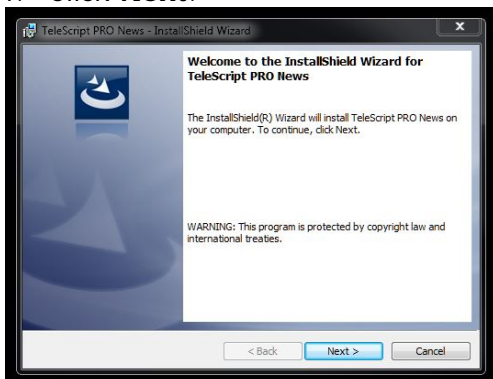
Austin, TX

Tel: 512 302 0766 Web: www.tswtx.com

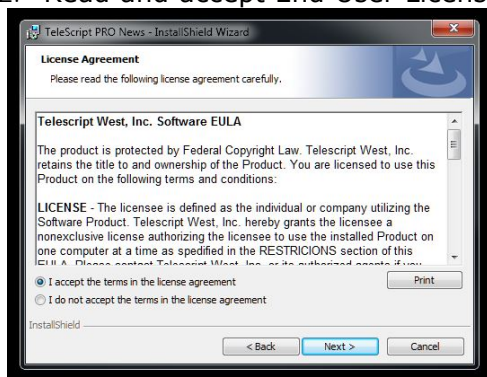
Install TeleScript PRO software

Run the TeleScript PRO installer, and follow the install steps:

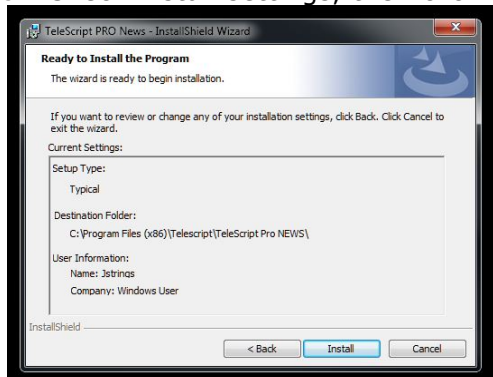
1. Click **Next**.



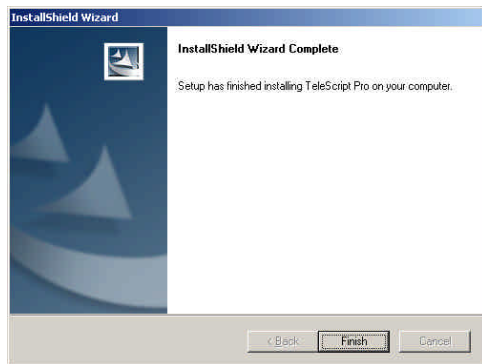
2. Read and accept End User License Agreement.



3. Check install settings, then click "Install".



6. After the installation, click **Finish** to exit the installer.



Security Key Driver

DO NOT CONNECT A USB KEY TO THE COMPUTER BEFORE INSTALLING THE SECURITY KEY DRIVER.

The driver is found at:

Windows Start/All Programs/Telescript/TeleScript Pro NEWS/Sentinel Protection Installer 7.6.9.

After installing this driver, insert the USB Security Key and wait while Windows associates the hardware with the drivers. When the process is completed, Windows will display a message that the hardware is ready to use.

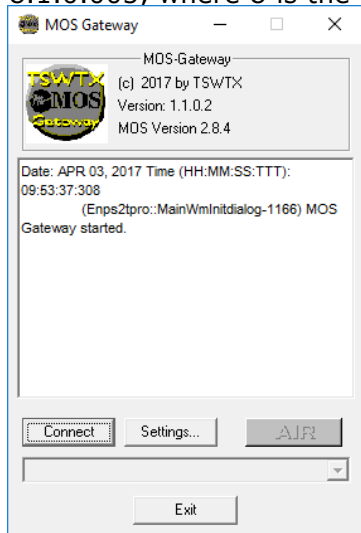
For complete information on installation, see:

<http://www.telescriptwest.com/tswservice/onlinecs/hesk/knowledgebase.php?article=19>

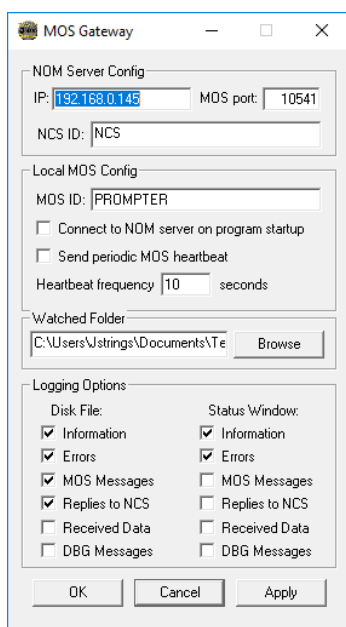
Configuration

TeleScript MOS Gateway Version 8.1.0.005 (or higher)

The TeleScript MOS Gateway program provides the communication between the ENPS server and the TeleScript ProNEWS prompting application. It must always be running in order to receive content from the server; a shortcut to it is automatically installed in the *Start Menu > Programs > Startup* folder, so it will start when the user logs on. If it is not running, start it by clicking the *Start Menu > Programs > TeleScript > TeleScript MOS Gateway* shortcut. The program window appears (note that current version is 8.1.0.005, where 8 is the product SKU code, not the program version):



Click on the **Settings** button to open the settings panel:



NOM Server Config

1. IP: IP address of the ENPS NOM Server
2. MOS Port: TCP port to use (10541 is standard)

Local MOS Config

3. MOS ID (Arbitrary name as entered in ENPS MOS configuration)
4. Connect to server on startup
5. Send periodic MOS heartbeat (normally, done by NCS)

Watched Folder

8. TPRO Remote Folder. This must be set also in TeleScript ProNEWS. MOS-Gateway will add "PROMPT-%MOSID%.TRL" to the prefix you supply.

9. Browse

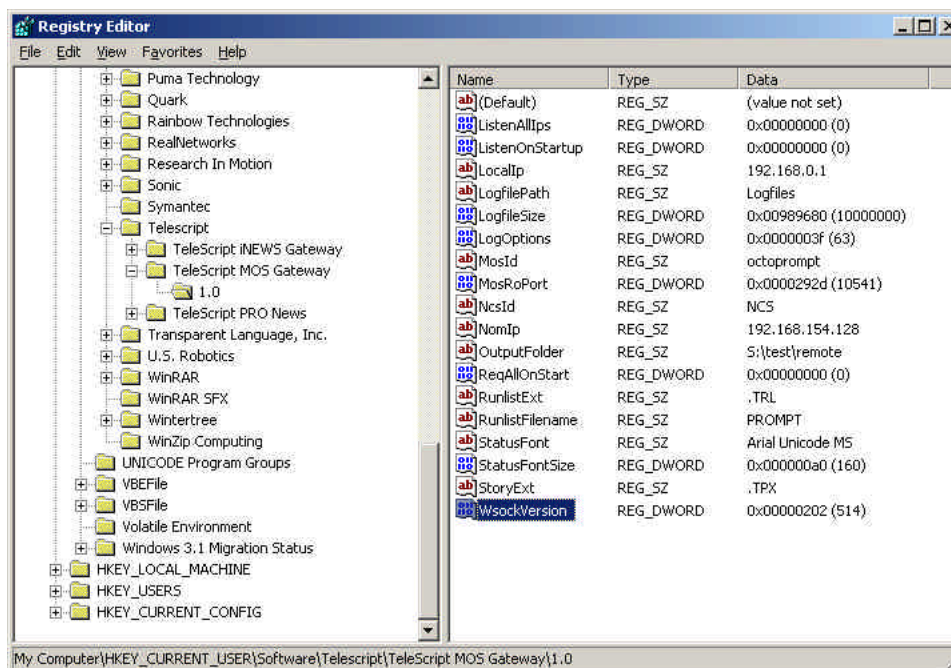
Logging Options

10. Disk File / 11. Status Window

Checking the boxes next to each information type will log that particular data to the selected log destination. Disk File logging is required for technical support. The Status Window log is a good monitor of activity in real-time.

Registry Settings

Several settings for the TeleScript MOS Gateway can only be changed using the Windows Registry Editor. Open the Registry Editor by clicking *Start Menu > Run*, then type in **regedit**, then click **OK**. The Registry Editor window should then appear:



Click the plus icon next to the following registry items: *HKEY_CURRENT_USER > Software > TeleScript > TeleScript MOS Gateway > 1.0*. The window should look something like the above screenshot.

Below is a description of the settings that are not configurable through the settings panel:

LogFileSize: The maximum size of a single log file, in bytes.

NcsId: The NCS ID of the ENPS server. Unique identifier, up to 256 characters.

NOTE: As of version 1.0.001.16 of the TeleScript MOS Gateway, the NCS ID must be entered using the Registry Editor. Change the default value of "NCS" to the appropriate NCS ID of the ENPS server, otherwise errors may occur.

These settings may be selected using the right-click context menu on the main dialog:

Log File Path: The location of Disk Log Files for TSW Mos-Gateway. These files are often required for Technical Support. It is suggested that the user store these logs in a subfolder of the user's Documents\TeleScriptProData\Logfiles folder.

Display Log: This will send a selected log file to Windows Notepad for analysis.

Keep On Top: Causes Windows to present the MOS-Gateway on top of other dialogs and windows.

RunlistExt: The filename extension used for runlist files. Must be **.TRL**.

RunlistFilename: The filename for the runlist. Default is **PROMPT**. This string is concatenated with MOS-ID to form the Remote Runlist File Name (see TeleScript ProNEWS setup.)

StatusFont: Font used to display status window text. Default is **Arial Unicode MS**.

StatusFontSize: Font size for status window text, in TWIPS (twentieths of a point). Default is set to **160** (hex **0xA0**), or 8-point text.

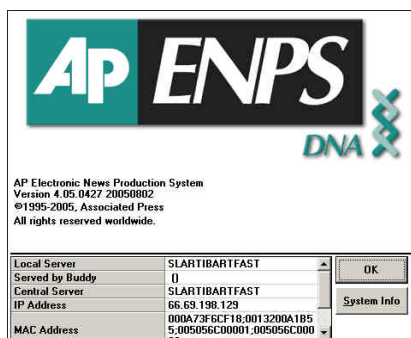
StoryExt: Filename extension used for script files. Must be **.TPX**.

WsockVersion: Version of Windows Sockets to use. Must be hex **0x0202** (**514**).

Required Settings

The settings necessary to configure for your particular installation are **NOM Server IP**, **MOS ID**, and the **TeleScript ProNEWS Remote Folder**. *(The other settings may be altered after the system is functional.)* It is also important that the correct **NCS ID** be entered. You must get this from your MOS sysop.

The values to enter for **NOM Server IP** and **NCS ID** will be determined by your network settings and ENPS configuration, respectively. To obtain this information using the ENPS Client software, click on the logo in the upper-left corner of the window. The following dialog should appear:



The **Local Server** field is the **NCS ID**, and the **IP Address** is the **NOM Server IP**.

As the **MOS ID**, for the examples in this documentation, use **telescript**. *(You may create a different MOS ID at any time.)*

For the **TeleScript PRO Remote Folder**, use **%My Documents%\TelescriptProData\Remote**.

Connect and Minimize

After the settings have been entered, click **OK**. Then click the **Connect** button to start the MOS Gateway listening for connections and incoming data. Leave the program running "in the background" by pressing the Minimize button in the program's title bar.

NOTE: The TSW MOS Gateway must be running for TeleScript ProNEWS to receive script and runlist updates!

TeleScript ProNEWS

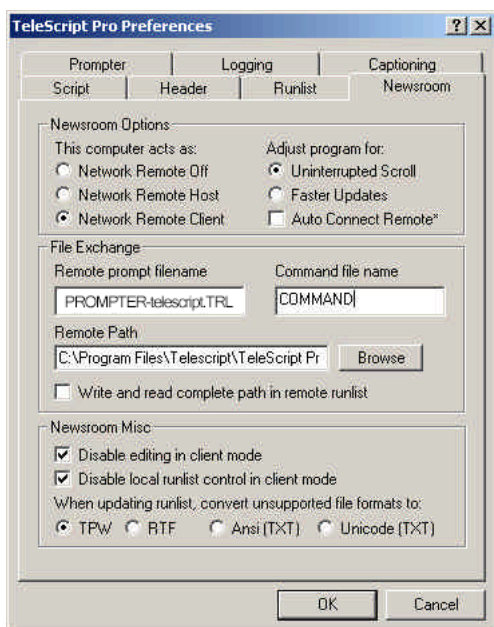
TeleScript ProNEWS is the software application used for prompting. In conjunction with the ENPS newsroom system and TSW MOS Gateway, TeleScript ProNEWS automatically receives runlist and script data, and all updates that may happen in “real time”.

Before this functionality may be used, however, several settings must be changed in TeleScript ProNEWS.

First, ensure that a TeleScript Security Key is attached to the system or that a valid timed license code has been installed.

Next, start the program by clicking *Start Menu > Programs > TeleScript > TeleScript Pro NEWS*, or double-clicking the *TeleScript ProNEWS* icon on the Desktop.

After the main program window appears, select *Tools > Options* from the main menu. In the Options dialog box, click on the Newsroom tab. The window should look like the following:



Check the radio button next to **Network Remote Client** and **Uninterrupted Scroll**.

The **Faster Updates** and **Auto Connect Remote** settings may be used after the system has been configured, but for now should be set to the defaults (*unchecked*.)

Under File Exchange, the **Remote prompt filename** should be set to **PROMPTER-telescript.TRL**, the **Command file** should be **COMMAND**, the **Remote Path** should be **%My Documents%\TeleScriptProData\Remote**, and the checkbox should be checked next to **Write and read complete path in remote runlist**.

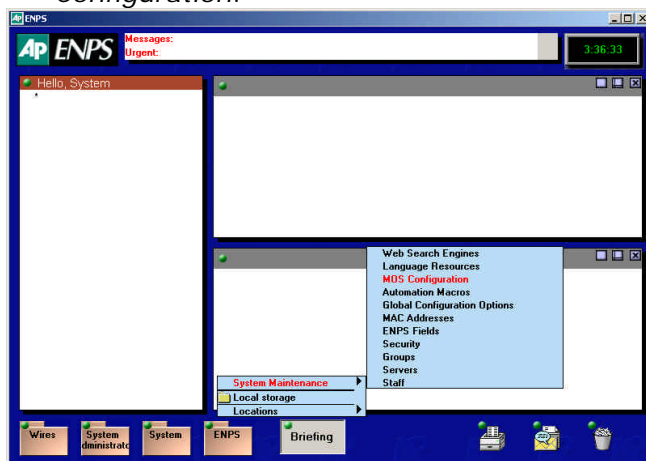
The boxes for **Disable editing in client mode** and **Disable local runlist control** should be checked, and **TPW** should be selected under **Convert unsupported file formats to**.

After the correct settings have been entered, **re-start TeleScript ProNEWS**.

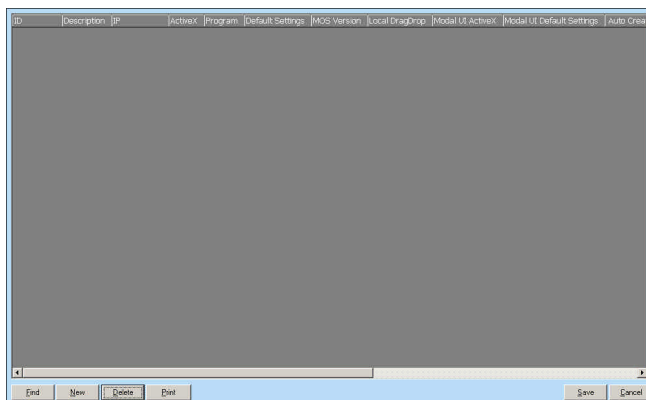
Add MOS Device to ENPS

Follow the steps below to set up the new MOS device with ENPS:

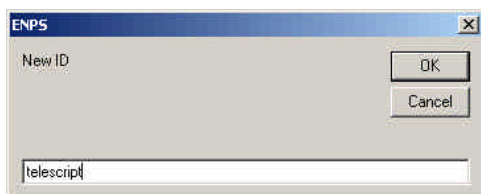
1. Start the ENPS Client software, then click *ENPS > System Maintenance > MOS Configuration*:



The following window appears:



2. Click the **New** button. Enter **telescript** in the New ID dialog, and then click **OK**.



3. In the MOS configuration window, double-click the description field to open a device configuration dialog:

ID	telescript
Description	
IP	
ActiveX	
Program	
Default Settings	
MOS Version	
Local DragDrop	
Modal UI ActiveX	
Modal UI Default Settings	
Auto Create	<input type="checkbox"/>
Username	
Password	
Read Only	
Alias	
Story Send	<input type="checkbox"/>

OK Cancel

In the **description** field, enter **TeleScript MOS Gateway**.

In the **IP** field, enter the IP address of the computer running the TeleScript MOS Gateway.

The **Program** field may be modified to create the device for a specific program or channel, but is not mandatory.

Enter **2.8.4** for the **MOS Version**.

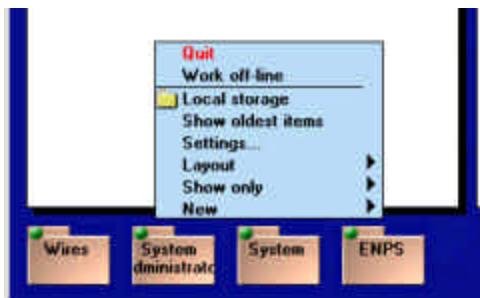
Check the fields next to **Auto Create** and **Story Send**.

After all the above settings have been entered, the dialog should look like the one below:

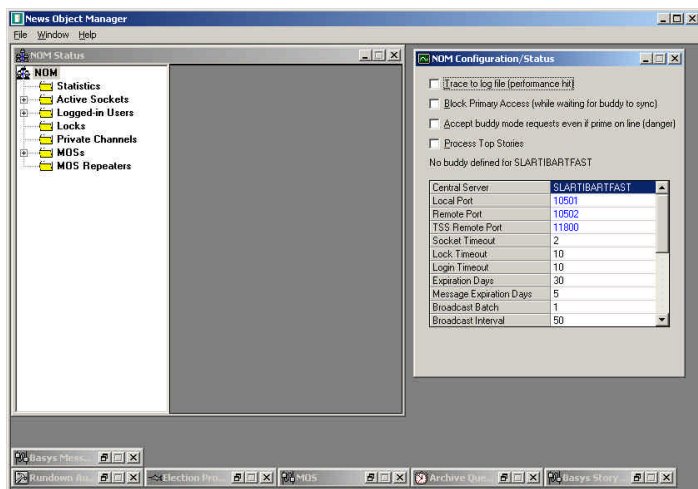
ID	telescript
Description	TeleScript MOS Gateway
IP	192.168.0.1
ActiveX	
Program	
Default Settings	
MOS Version	2.8.4
Local DragDrop	
Modal UI ActiveX	
Modal UI Default Settings	
Auto Create	<input checked="" type="checkbox"/>
Username	
Password	
Read Only	
Alias	
Story Send	<input checked="" type="checkbox"/>

OK Cancel

Click **OK** to create the device, then click **Save** in the MOS configuration window. Exit the ENPS client by choosing [User Folder Rover] > Quit:

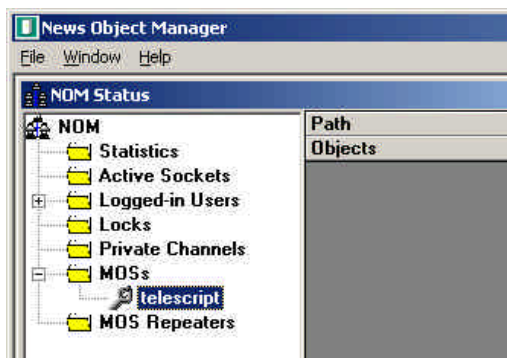


- On the ENPS server, re-start the **News Object Manager (NOM)** software. Its window looks similar the following:



Click **File > Exit**, and then choose **Yes** to exit the program. If the **Watch** program is running, **News Object Manager** will re-start automatically. If not, start the program manually by clicking **Start Menu > Programs > ENPS > News Object Manager**.

- Verify the device was created successfully in **News Object Manager** by opening the **NOM Status** window, and then clicking the plus next to **MOSs**. The device **telescript** should be listed:



NOTE: THE ABOVE STEPS REQUIRE ADMINISTRATIVE ACCESS TO THE ENPS SERVER. Please contact your ENPS system administrator if assistance is required with this step.

Procedure

Start/Connect the TeleScript MOS Gateway

Unless it's already running, start the TeleScript MOS Gateway by clicking *Start Menu > Programs > Telescript > TeleScript MOS Gateway*. After the program has opened, click its **Connect** button, and then minimize the program by clicking the Minimize button on the Title bar (*the “_” button.*)

NOTE: The MOS Gateway program must be running for runlist and script data to be received!

Start/Connect TeleScript ProNEWS

Unless it's already running, start TeleScript PRO by clicking *Start Menu > Programs > Telescript > TeleScript PRO*. On the program menu, click *Tools > Connect*.

Activate rundown in ENPS

This section will assume that you have access to all of the necessary elements to create an ENPS Rundown: users, scripts, etc. For assistance with these, please consult the ENPS User's Manual, or support@enps.com.

For our example, first create a rundown with several scripts all containing text (*the **Import Text or RTF** function is useful*), or for all intents and purposes use an actual rundown that will be used in production (*make a copy or backup, of course!*)

Here is an example of an ENPS rundown:

ENPS

AP ENPS

Messages:
Urgent:

4:13:19

Prompter Test [08/15/2005 14:00]

Page	Story Slug	Segment	Break	Anchor	Final Appl	Est Duration	Actual	Front	Back	Cume	Last Mod By
A1	Opening				✓		0:00	2:00:00 PM	2:02:47 PM	0:00	System
A2	Decartes ponders existen				✓	11:21	2:00:00 PM	2:02:47 PM	11:21	System	
A3	Pants color reflect Captain				✓	1:08	2:11:21 PM	2:14:08 PM	12:29	System	
A4	Comm. Break 1				✓		0:00	2:12:29 PM	2:15:16 PM	12:29	System
A5	Hindi cricket story				✓	1:48	2:12:29 PM	2:15:16 PM	14:17	System	
A6	New	Confucius				12:56	2:14:17 PM	2:17:04 PM	27:13	System	
A7	Comm. Break 2				✓		0:00	2:27:13 PM	2:30:00 PM	27:13	System
A8	Closing				✓		0:00	2:27:13 PM	2:30:00 PM	27:13	System

Under 02:47

Wires

System administrat

System

ENPS

Briefing

Next, open the rundown properties window by clicking *Rundown Rover > Properties*, or by double-clicking the rundown title bar. The rundown properties window looks like the following:

Scroll down the right-hand list, and find the **MOS Story Send** field. Click it to open a list of all available MOS devices that support the story send command. Check the box next to **telescript**, and then click OK:

When you are ready to make the rundown active (send it to the MOS Gateway), check the **MOS Control Active** field, then click **Apply** or **Go**. The rundown data and all script files are then sent to the TeleScript MOS Gateway.

The status window in the TeleScript MOS Gateway should show a variety of activity:

Next, find the name of the rundown in the combo box:

Select it, and click the **ON AIR** button. This command sends the selected rundown to the prompter. The **ON AIR** button turns red indicating the selected program is on-air:



Minimize the MOS Gateway to the Taskbar.

Finally, bring up TeleScript ProNEWS. If the program isn't connected, click *Tools > Connect*. The rundown will appear in the TeleScript PRO runlist window:

N.	File	Slugline	Anchor	Read	Tape	Total	Show
1	SFA64B70-CBB6-4A82-B96FA4B9CEEDEF51.TPX	Opening	News Anchor	00:00:00	00:00:00	00:00:00	00:00:00
2	F8CF709A-2336-460E-ACC0F3C6F848935B.TPX	Decartes ponders existence	News Anchor	00:14:52	00:00:00	00:14:52	00:14:52
3	C4FAC458-79A6-419B-BC03FE85B55205FE.TPX	Pants color reflect Captain's plight	News Anchor	00:01:33	00:00:00	00:01:33	00:16:25
4	84EE591D-B37C-4BEA-A2F134994EB292A1.TPX	Comm. Break 1	News Anchor	00:00:00	00:00:00	00:00:00	00:16:25
5	CEE8A78C-86F1-4B6F-A19DFACC2CE93FB7.TPX	Hindi cricket story	News Anchor	00:02:27	00:00:00	00:02:27	00:18:52
6	3B9956AE-22E3-4EAC-B281E204C947F927.TPX	New - Confucius	News Anchor	00:17:15	00:00:00	00:17:15	00:36:07
7	046C7F01-B021-4D33-A836058D6868368.TPX	Comm. Break 2	News Anchor	00:00:00	00:00:00	00:00:00	00:36:07
8	40186D73-D98B-4892-891031988F668FD8.TPX	Closing	News Anchor	00:00:01	00:00:00	00:00:01	00:36:08

Remote updated Row 1 / 6 Col 0 PStatus INS CLR BIU

The runlist content and story text and data is now under the control of the ENPS newsroom software. All changes made in ENPS will be automatically reflected in TeleScript ProNEWS.

All prompting operations can occur and the program may function normally, although performance will depend on the system's hardware and general configuration.

To stop receiving updates (manual control), click *Tools > Newsroom > Disconnect*.

Support

Please use the following contact information with assistance with the above information:

TeleScript ProNEWS
TSW MOS-Gateway

Telescript West, Inc. Austin, TX
78757
Tel: 512.302.0766
www.telescriptservice.com
support@telescriptwest.com

ENPS Newsroom System

AP Broadcast Technology
1825 K Street NW, Suite 800
Washington, DC 20006-1232
United States of America
Tel: +1-202-736-1120
www.enps.com
Contact: support@enps.com